



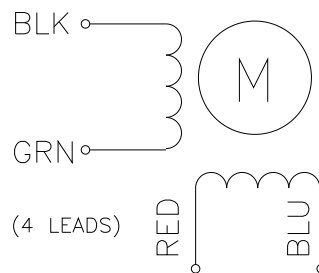
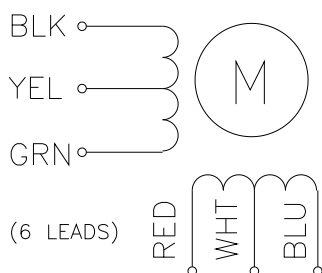
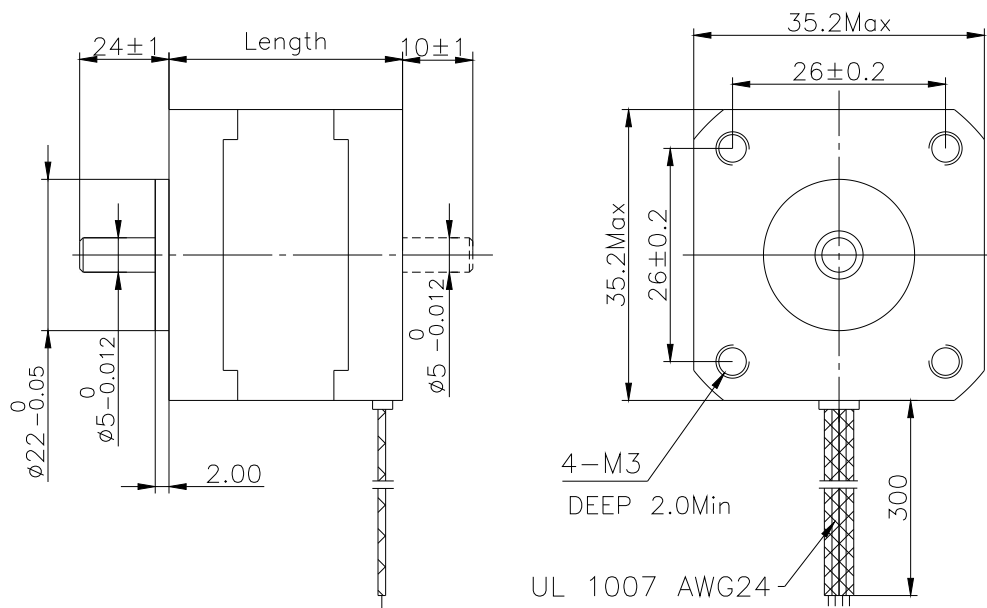
MOTORIZED YOUR WORLD, AUTOMATE YOUR DREAMS!

35 mm Series (NEMA 14 size)

Step Angle	1.8° (+/-5%@ full step, no load)
Resistance Accuracy	+/-10%
Inductance Accuracy	+/-20%
Temperature Rise	80DegreeC MAX.
Ambient Temperature	-20 ~ +50 DegreeC
Shaft Radial Play	0.02MAX @ 450g-load
Shaft Axial Play	0.08MAX @ 450g-load
MAX Radial Force	28N @ 20mm from the flange
MAX Axial Force	10N
Dielectric Strength	500VAC for one minute
Insulation Resistance	MIN 100Mohms, 500VDC

Model	Rated Voltage	Current /Phase	Resistance /Phase	Inductance /Phase	Holding Torque	Leads Number	Rotor Inertia	Approx. Weight	Detent Torque	Body Length	
											Single Shaft
LDO-35ST***	V	A	ohms	mH	g.cm		g.cm ²	Kg	g.cm	mm	
***26-0284A	***26-0284B	7.4	0.28	26	27	700	4	10	0.13	60	26
***28-0504A	***28-0504B	10	0.5	20	14	1000	4	11	0.14	80	28
***36-1004A	***36-1004B	2.7	1.0	27	4.3	1400	4	14	0.18	100	36

(Model format: LDO-35ST36-1004A)



Note: NEMA8,11,14,15,17,23,34,43 size are available for stepping motors, and 0.9Degree Step is also available.